

# IDWedgePro License Utilities

---

There are two License utilities to manage the license key on activated versions of IDWedgePro:

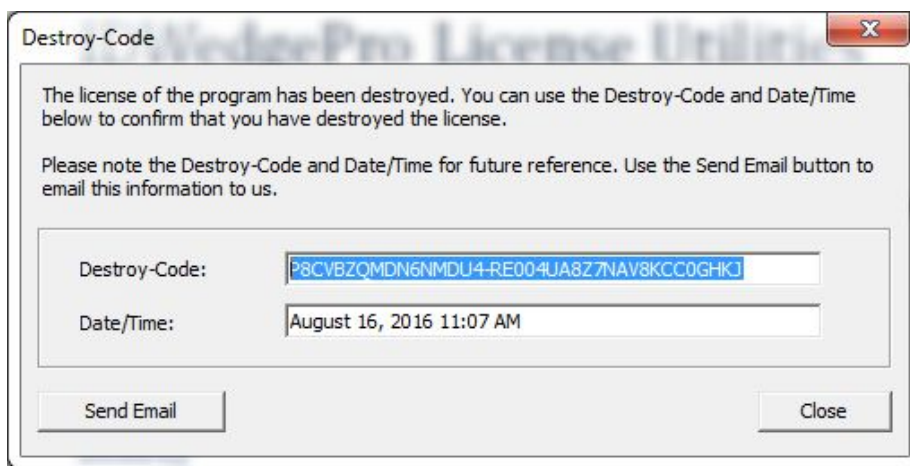
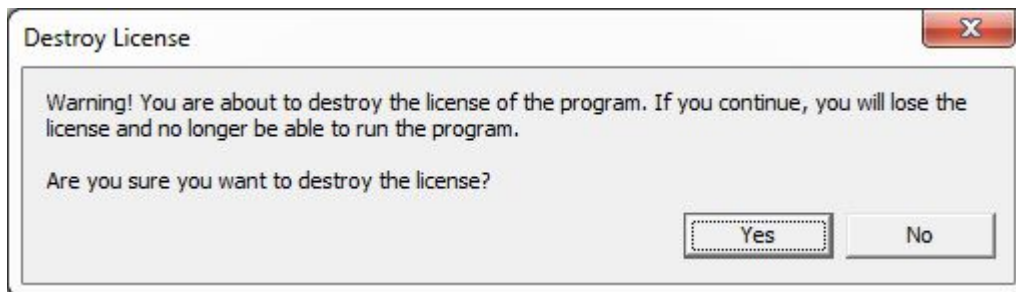
Destroy.exe

Transfer.exe

The rest of this document describes how to use these utilities.

## Destroy

As the name implies, this tool destroys the license on the machine with the activated version of IDWedgePro, and provides a cryptogram that can be used by TokenWorks to verify that the license was destroyed. When you run the Destroy utility, you will see the following screen, if you click no, then nothing happens. If you click yes, then the license will be destroyed and you will see the Destroy-Code screen. Do not bother clicking on the Send Email button; it will try to run a windows based email client that is probably not available on your machine. Copy the Destroy code and send it in an e-mail to TokenWorks. The Destroy code should prove you have destroyed the license, and your activation code will be restored so you can install the app on another machine.



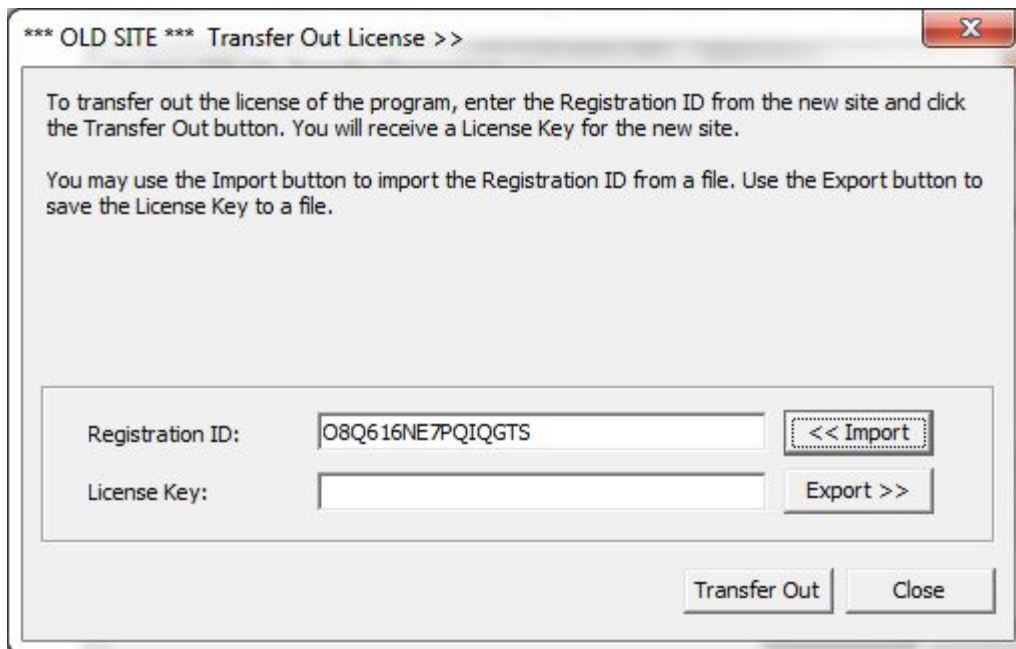
## Transfer

The Transfer utility allows the user to transfer the license for the protected application between machines via the License Key. In order to transfer the license from one machine to another, the user must run the Transfer utility on both machines. Assume you want to transfer the license from machine A to B, the steps are described below.

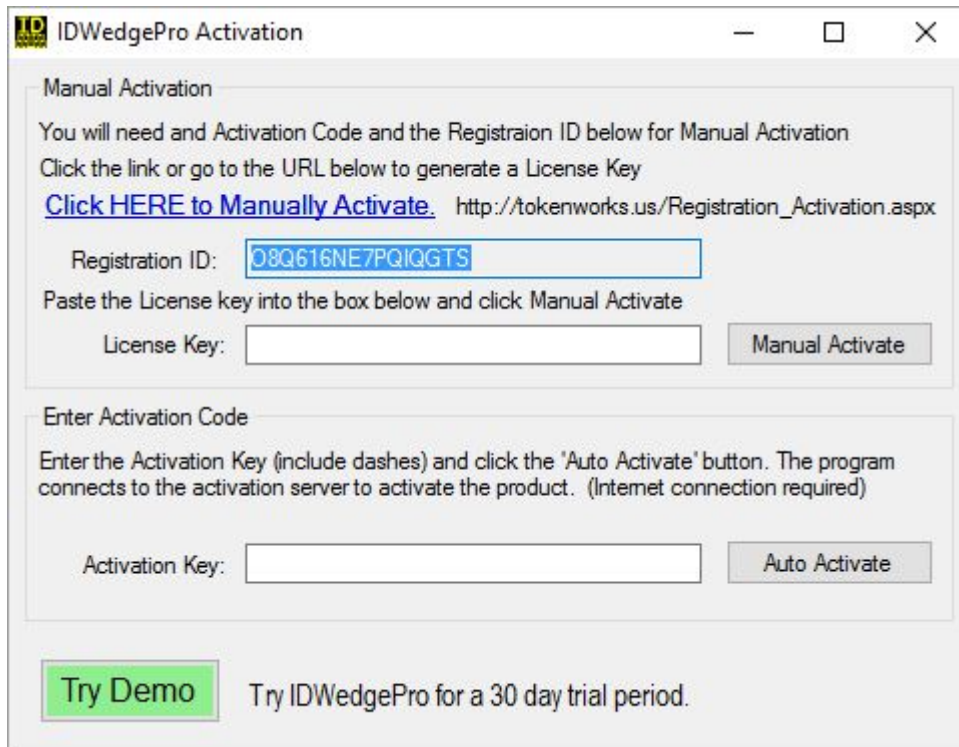
1. Run the Transfer utility on machine B. The dialog box provides a Registration ID.
2. Run the Transfer utility on machine A. Then, enter the Registration ID provided by machine B. In this step, the utility generates the License Key that encodes the current license status, and destroys the Key on the machine.
3. On machine B, enter the License Key provided by machine A. The license transfer is complete.

Since the above transfer method requires an exchange of the Registration ID and License Key, the two machines should be able to share files. It is highly suggested that you use the import and export buttons to exchange simple text files, rather than attempting to type in the codes manually. Transfer is the recommended approach to handling licenses as it is a self - managed process. If you choose to use Destroy, you will need to take into consideration that TokenWorks will be involved in the process, and that extra time will be required to complete the process.

Step1- Registration ID from Machine B which has no license yet



Note that this is the same Registration ID that you would see if you run IDWedgePro on Machine B as seen on the next page:

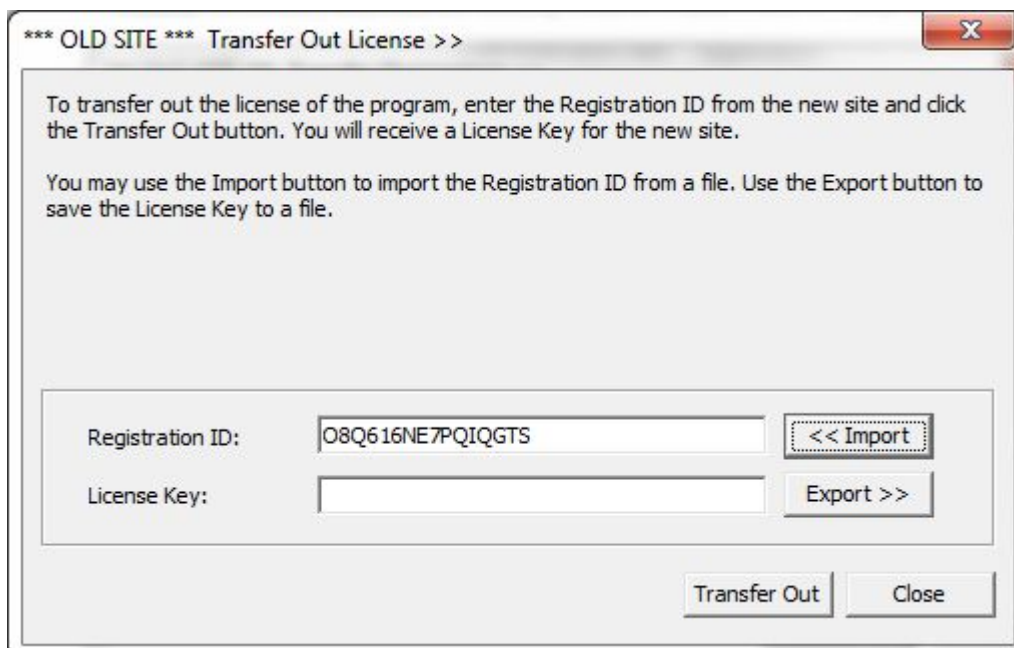


The image shows a window titled "IDWedgePro Activation". It has two tabs: "Manual Activation" and "Enter Activation Code". The "Manual Activation" tab is selected. It contains instructions: "You will need an Activation Code and the Registration ID below for Manual Activation. Click the link or go to the URL below to generate a License Key." Below this is a blue link: "Click HERE to Manually Activate. http://tokenworks.us/Registration\_Activation.aspx". There is a text box for "Registration ID:" containing "08Q616NE7PQIQGTS". Below that is a text box for "License Key:" and a "Manual Activate" button. The "Enter Activation Code" tab contains instructions: "Enter the Activation Key (include dashes) and click the 'Auto Activate' button. The program connects to the activation server to activate the product. (Internet connection required)". It has a text box for "Activation Key:" and an "Auto Activate" button. At the bottom, there is a green "Try Demo" button and the text "Try IDWedgePro for a 30 day trial period."

These two screen shots show that the Registration ID from the machine with no license is the input to the Transfer utility.

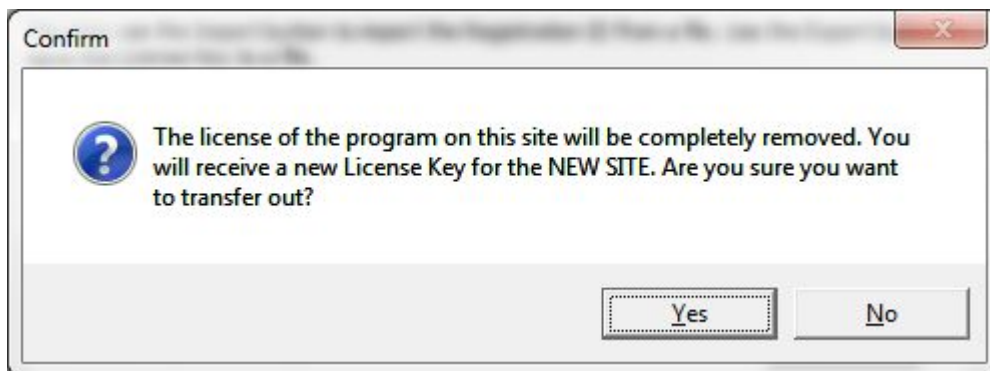
You have to either copy the Registration ID from the Activation screen, and paste it into a text file, or use the Transfer Utility to export the Registration ID to a text file.

Step 2, Running Transfer Utility on Machine A, that has a license that you want to move to Machine B with the imported Registration ID from Machine B

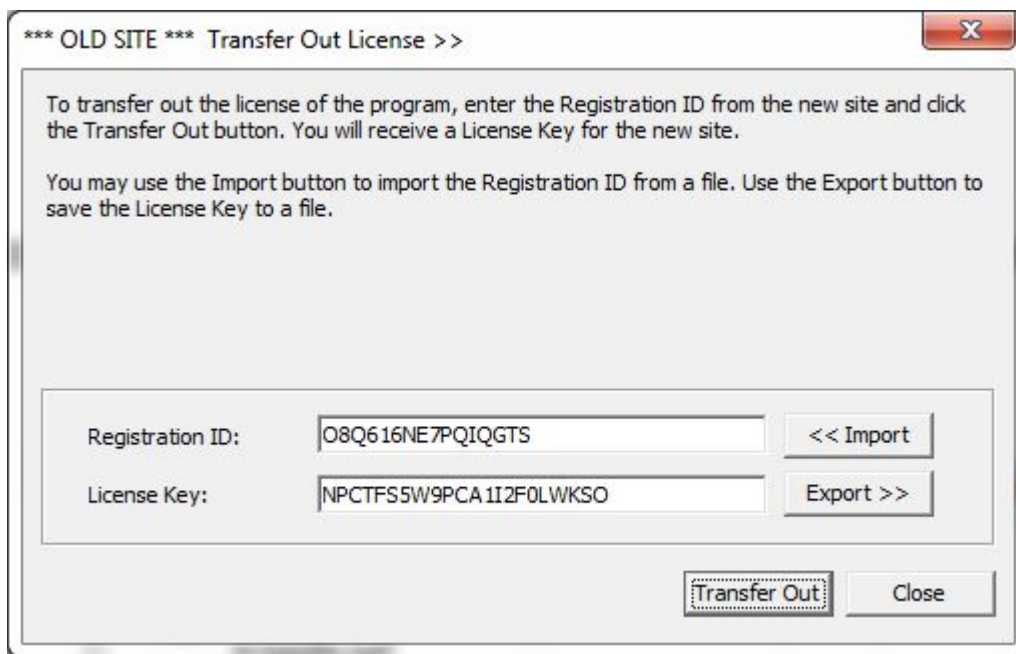


The image shows a window titled "Transfer Out License >>". It contains instructions: "To transfer out the license of the program, enter the Registration ID from the new site and click the Transfer Out button. You will receive a License Key for the new site." Below this is another instruction: "You may use the Import button to import the Registration ID from a file. Use the Export button to save the License Key to a file." There are two text boxes: "Registration ID:" containing "08Q616NE7PQIQGTS" and "License Key:". To the right of the "Registration ID:" box is a button labeled "<< Import". To the right of the "License Key:" box is a button labeled "Export >>". At the bottom, there are two buttons: "Transfer Out" and "Close".

Step 2 continued – After Importing the Registration ID from Step1, Click the Transfer Out button, you will see the following message box:



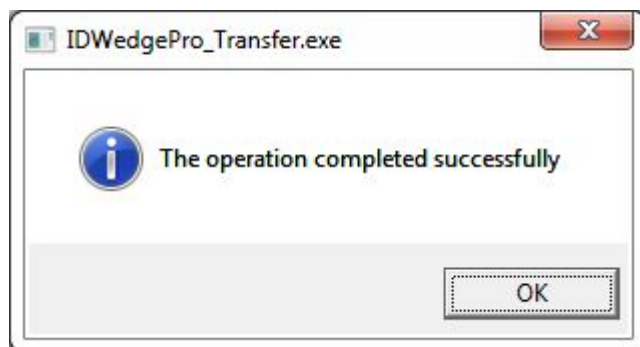
Click Yes, and you will now see the license code that you are going to transfer, and you will have also removed the license from Machine A



Next, click the Export button to export the License Key to a text file:

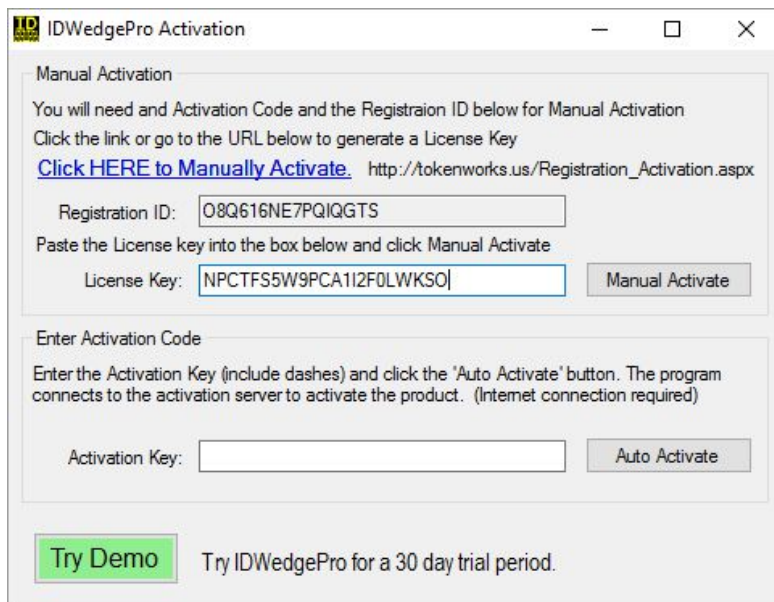
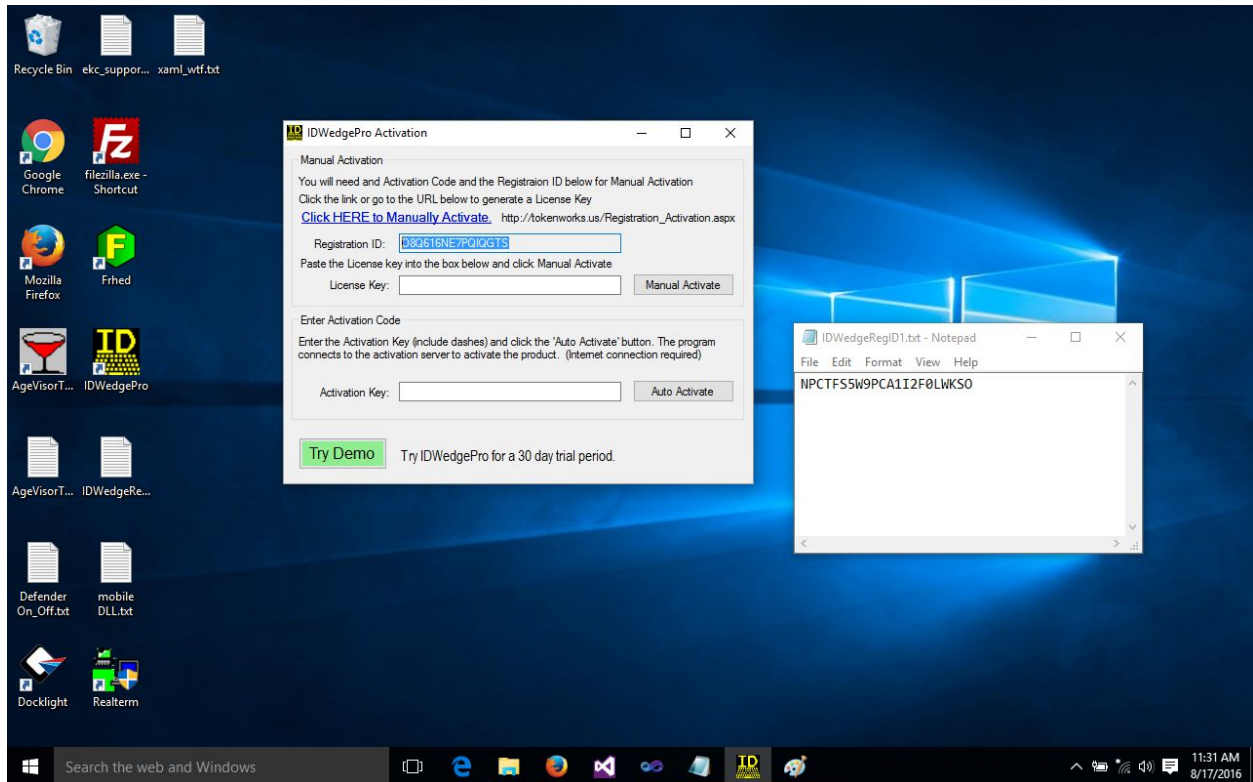


Then Close the Transfer utility



Now you have a license code from Machine A, exported to a text file, usually stored on a USB drive or a network drive.

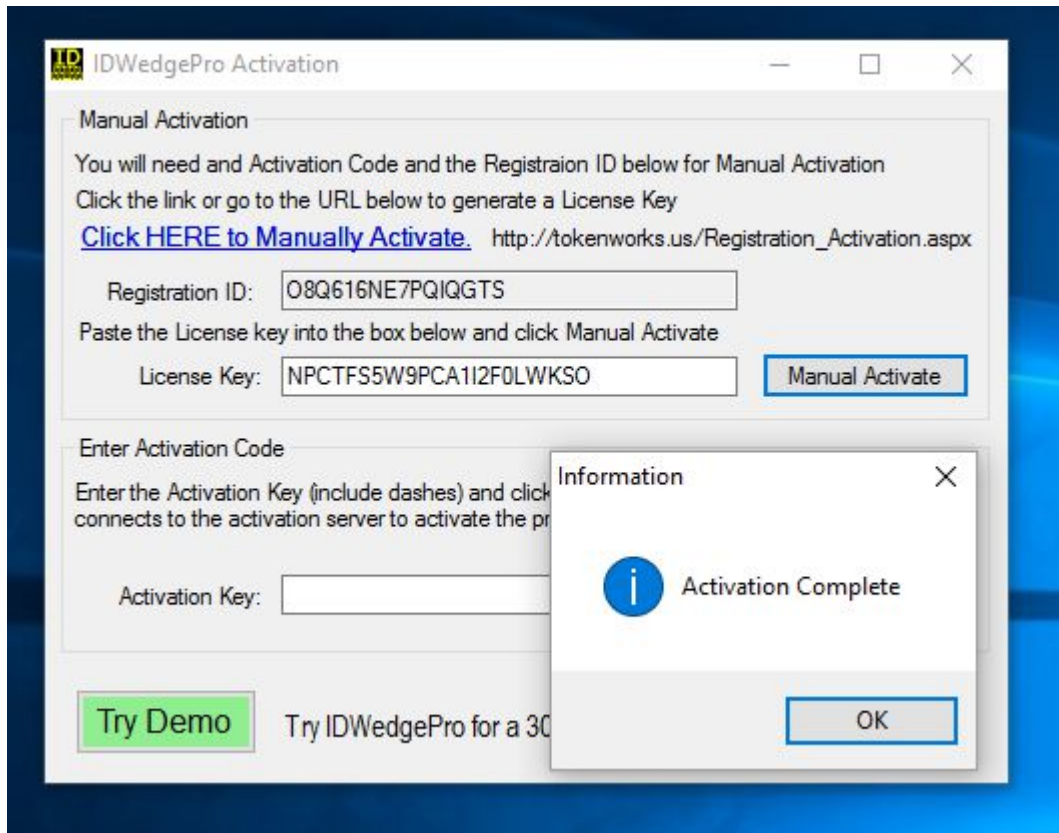
Run IDWedgePro on Machine B, with the license code available to copy/paste:



License code is pasted into the License Key box in the Manual Activation section



Click on Manual Activate:



The license was transferred and the app is activated.